

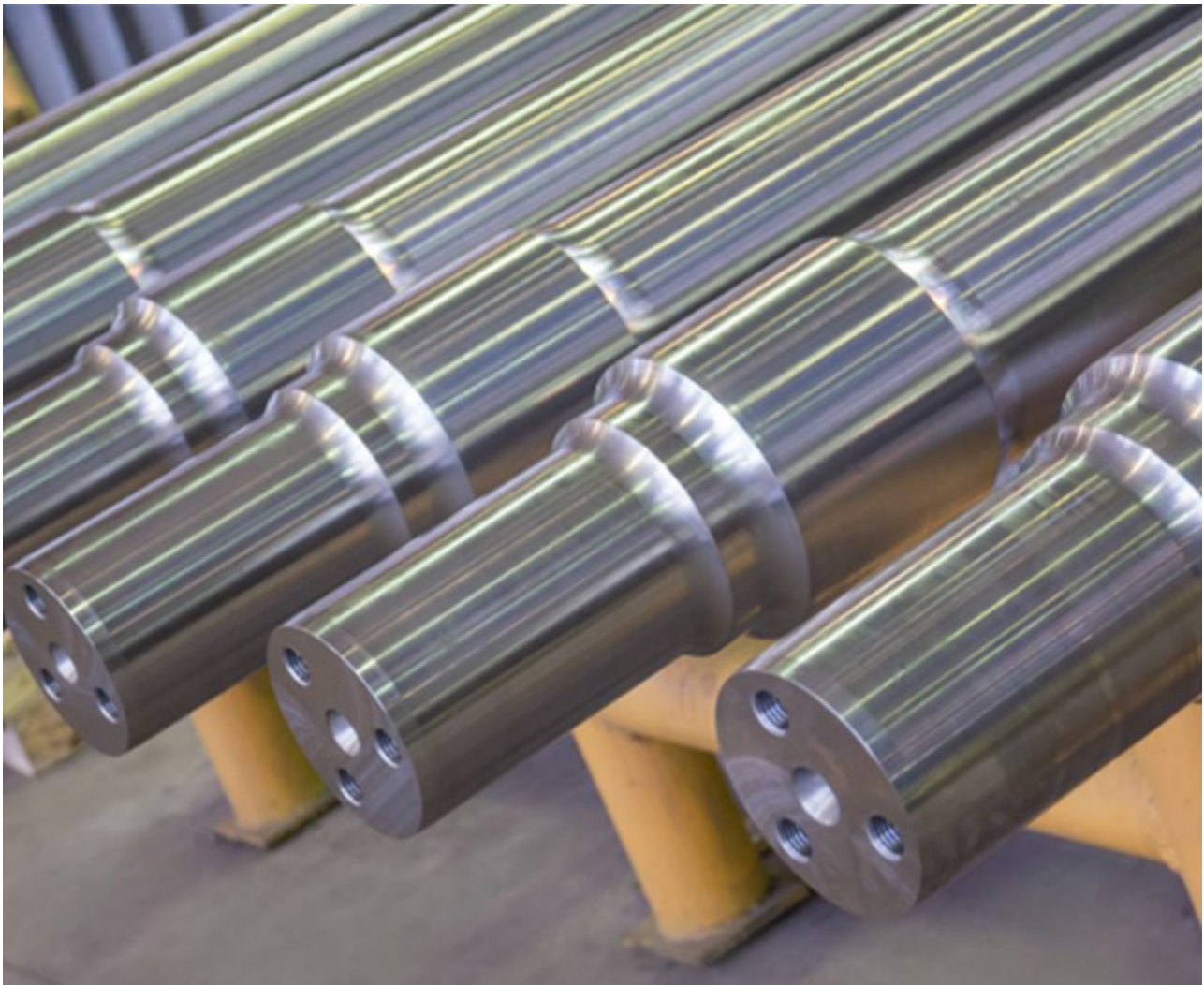
Detecting Cracks in a Rail Axle Center Using Eddy Current Testing

A customer needed a conventional eddy current solution to detect cracks in two areas of a rail axle center: the counter and the center bores. The goal was to create a solution to minimize operator intervention with both equipment and instrument settings.

Forging Axle Shafts Introduces Surface and Internal Defects

The axle shafts are forged and then machined down to meet internal specifications. The forging process can generate surface and internal defects, such as hairline subsurface cracks, inclusions, and pitting. When machined, internal deformities can increase in size and break the surface. These defects can lead to part failures.

Although these cracks tend to be surface breaking, a dedicated eddy current inspection method was needed rather than a subjective visual inspection to detect the axial surface-breaking cracks.

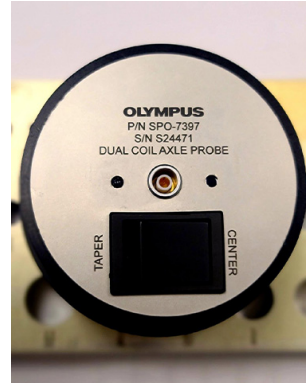


Axles

Eddy Current Equipment Used to Detect Defects in a Rail Axle Center

This inspection used the following equipment:

- NORTEC™ 600 eddy current flaw detector
- SPO-7397 custom dual coil axle center probe—Q6100015:
 - The probe contains one bridge differential coil to test the length of the tapered section and one small bridge differential coil to test the bottom bore of the axle center



Probe setup to inspect defects in a rail axle center

Procedure to Detect Defects in a Rail Axle Center

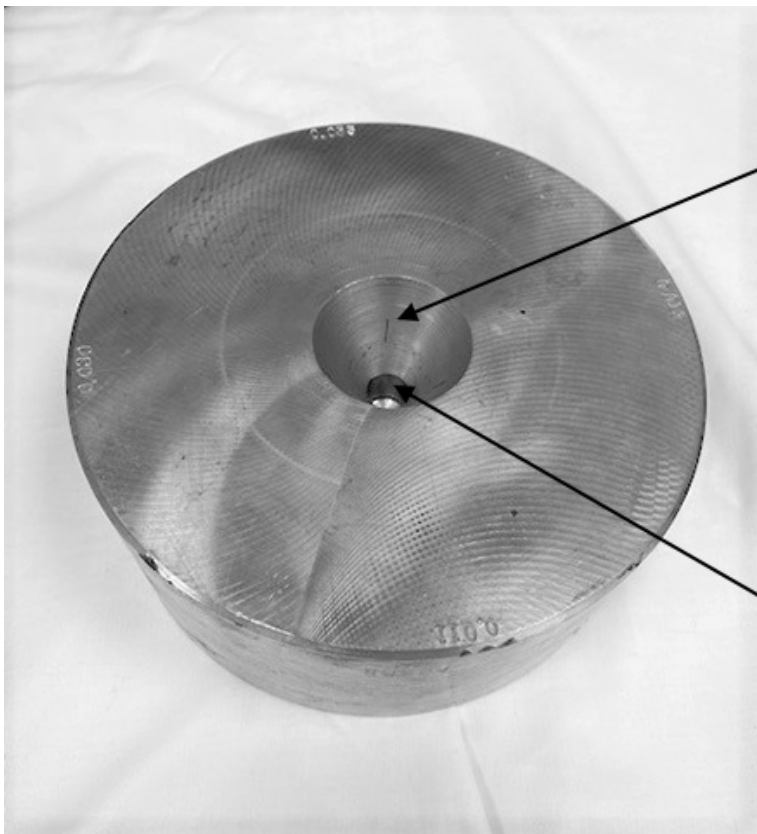
The test setup involved placing the probe in the axle center, using the switch to set the area of inspection (taper or center), nulling the coils, and rotating over the electrical discharge machined (EDM) notches provided by the customer.

To change areas of interest, the operator must simply switch the selector to change coils, input the appropriate test settings, and null the instrument.

Both tests can be conducted at 300 kHz with minimal changes in settings. Gain adjustment and angle adjustment can be used to improve results.

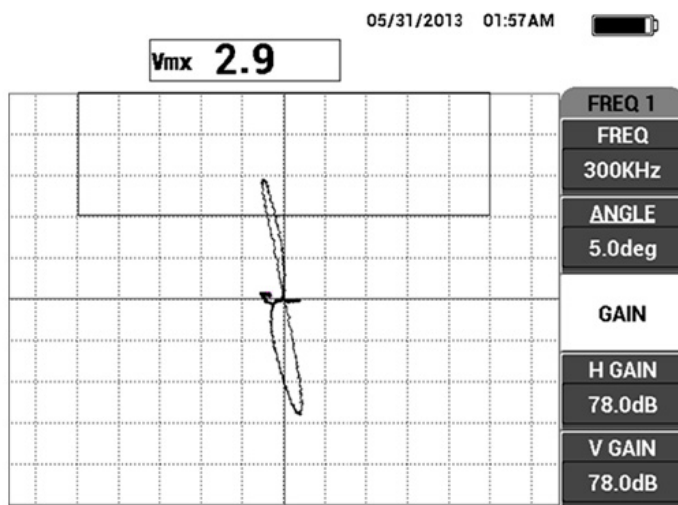
Eddy Current Inspection Results

The following images were taken from tests using the SPO-7397 probe on a supplied reference standard in both locations with the NORTEC 600 flaw detector.

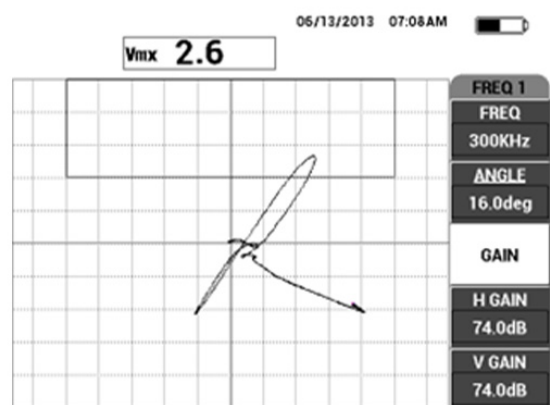


Tapered (countersink) axial flaw
(0.889 mm or .035 in. deep)

Center bore axial flaw
(0.381 mm or .015 in. deep)



Test signal on a notch (0.889 mm or .035 in. deep) in the tapered section of the center



Test signal on a notch (0.381 mm or .015 in. deep) in the center bore

Conclusion

Tests conducted on the customer-provided samples with noted flaws were resolved.

As seen in the instrument screenshots, notches on the customer-supplied test/reference standard were detected with a favorable signal-to-noise ratio. The eddy current solution reduces the changeover time between area of inspection setups. This successful application may lead to further probe designs for different axle geometries and can also be implemented into an automated solution.

Related Product



NORTEC 600

The new NORTEC 600 incorporates the latest advancements in high-performance eddy current flaw detection into a compact, durable unit. With its vibrant 5.7 inch VGA color display and true full-screen mode, the NORTEC 600 produces user-selectable, highly contrast eddy current signals.

Learn More ► <https://www.olympus-ims.com/nortec600/>